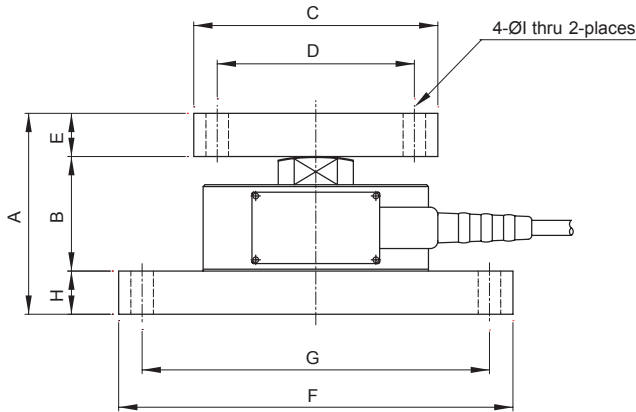


## Load Button Type (ACCE-CLS-TWL)

### DIMENSIONS



Capacity	A	B	C	D	E	F	G	H	I
0.5, 1, 2, 3 tf	105	59	130x130	105x105	23	210x130	185x105	23	12
5 tf	107	61	130x130	105x105	23	210x130	185x105	23	12
10, 15 tf	140	80	160x160	125x125	30	160x160	125x125	30	14
20, 30 tf	175	115	200x200	150x150	30	200x200	160x160	30	14
50 tf	195	107	260x260	200x200	58	260x260	200x200	30	23
100 tf	275	155	360x360	280x280	60	360x360	280x280	30	27

### ACCESSORY FEATURES

- High Durability
- Appropriate for Tank and Hopper application
- Designed with safety Coefficient considerations

### MANUAL

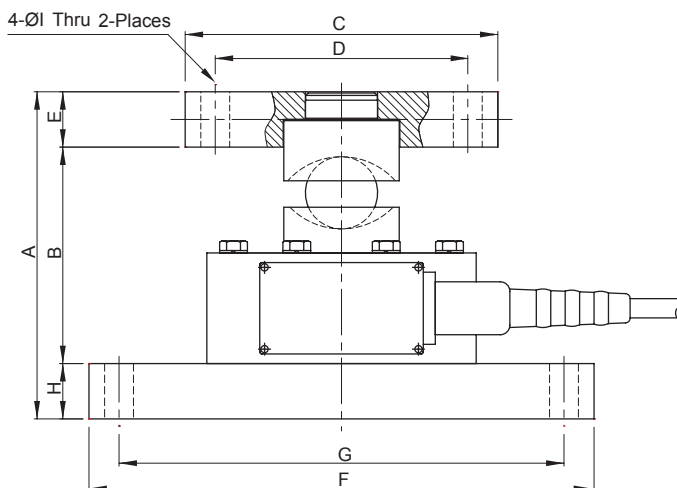
- Load cell connection with the Mounting Plate
- Fix the Mounting plate on the surface
- Check the level of the Mounting Plate
- Place the Loading Plate over the Load Cell
- Check the value with a display systems

### OPTION

- Protection to breakaway
- Steel
- Stainless steel

## Ball Cup Type (ACCE-CLS-TWB)

### DIMENSIONS



Capacity	A	B	C	D	E	F	G	H	I
0.5, 1, 2, 3 tf	136	90	130x130	105x105	23	210x130	185x105	23	12
5 tf	145	99			23	210x130	185x105	23	12
10, 15 tf	166	106			30	160x160	125x125	30	14
20, 30 tf	196	136			30	200x200	160x160	30	14

### ACCESSORY FEATURES

- High Durability
- Appropriate for Tank and Hopper application
- Designed with safety Coefficient considerations

### MANUAL

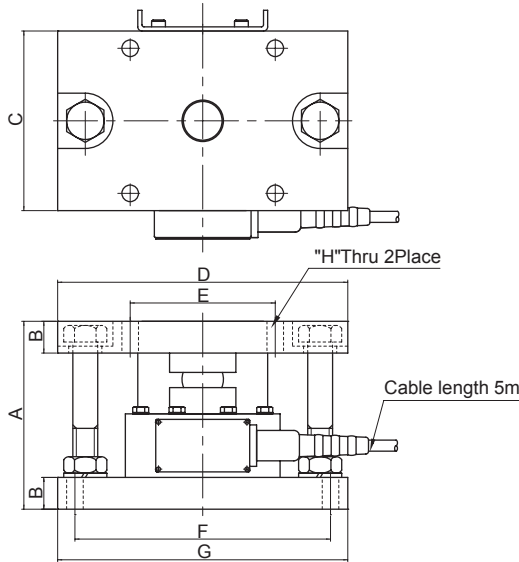
- Load cell connection with the Mounting Plate
- Fix the Mounting plate on the surface
- Check the level of the Mounting Plate
- Place the Loading Plate over the Load Cell
- Check the value with a display systems

### OPTION

- Steel
- Stainless steel

### Protection to Breakaway (ACCE-CLS-TWM)

#### DIMENSIONS



Capacity	A	B	C	D	E	F	G	H
0.5, 1, 2, 3 tf	136	23	130	210	105x105	185x105	210	4 - Ø12
5 tf	145	23	130	210	105x105	185x105	210	4 - Ø12
10, 15 tf	166	30	160	220	105x105	125x125	220	4 - Ø14
20, 30 tf	196	30	200	270	105x105	160x160	270	4 - Ø14

#### ACCESSORY FEATURES

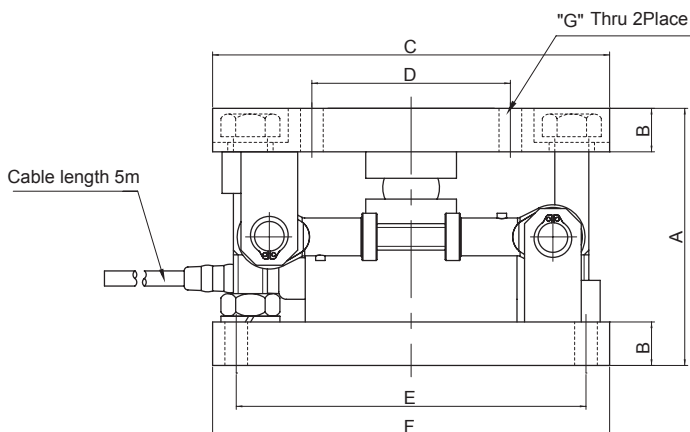
- High Durability
- Appropriate for Tank and Hopper application
- Designed with safety Coefficient considerations
- Prevention of separation by the bolt

#### MANUAL

- Load cell connection with the Mounting Plate
- Fix the Mounting plate on the surface
- Check the level of the Mounting Plate
- Place the Loading Plate over the Load Cell
- Check the value with a display systems

### Protection to Breakaway (ACCE-CLS-TWMC)

#### DIMENSIONS



Capacity	A	B	C	D	E	F	G
1, 2, 3 tf	136	23	210x180	105x105	185x105	210x180	4 - Ø12
5 tf	145	23	210x180	105x105	185x105	210x180	4 - Ø12
10, 15 tf	166	23	220x207	105x105	125x125	220x207	4 - Ø14
20, 30 tf	196	23	270x280	105x105	160x160	270x280	4 - Ø14

#### ACCESSORY FEATURES

- High Durability
- Appropriate for Tank and Hopper application
- Designed with safety Coefficient considerations
- Prevention of separation by the bolt
- Adjustment for the exact position by check rod

#### MANUAL

- Load cell connection with the Mounting Plate
- Fix the Mounting plate on the surface
- Check the level of the Mounting Plate
- Place the Loading Plate over the Load Cell
- Check the value with a display systems